

# What happens inside of a mosque?













# Rüstem Paşa Camii









The image shows the interior of a mosque, characterized by its stunning architectural details. The walls and ceiling are covered in intricate tilework, featuring a repeating pattern of blue and gold floral and geometric motifs. The architecture is defined by a series of pointed arches that create a sense of depth and grandeur. The floor is made of polished stone, reflecting the ambient light. The overall atmosphere is one of historical elegance and religious significance.

**What do you *NOT* see inside the  
mosques that you *DO* see in most  
kinds of churches?**













Why is this one different?



# *Design and Art*

- The depictions of human forms could be considered idolatry, a sin
- Primary forms of Islamic Art are
  - Ceramics
  - Architecture
  - Calligraphy
  - Geometric patterns

















The simple neighborhood mos



# *Friday Prayer* inside a small mosque





# **Other Faiths**

- **97% of the people of Turkey are Muslim**
- **Syria:**
  - **87% Muslim**
  - **10% Christian**











# Hamam

- A hamam is a Turkish bath (like a spa), once used all over the Middle East and Eastern Europe
- Why provide a public bath?
  - Because regular people didn't have indoor baths and plumbing
  - Also a good place to socialize



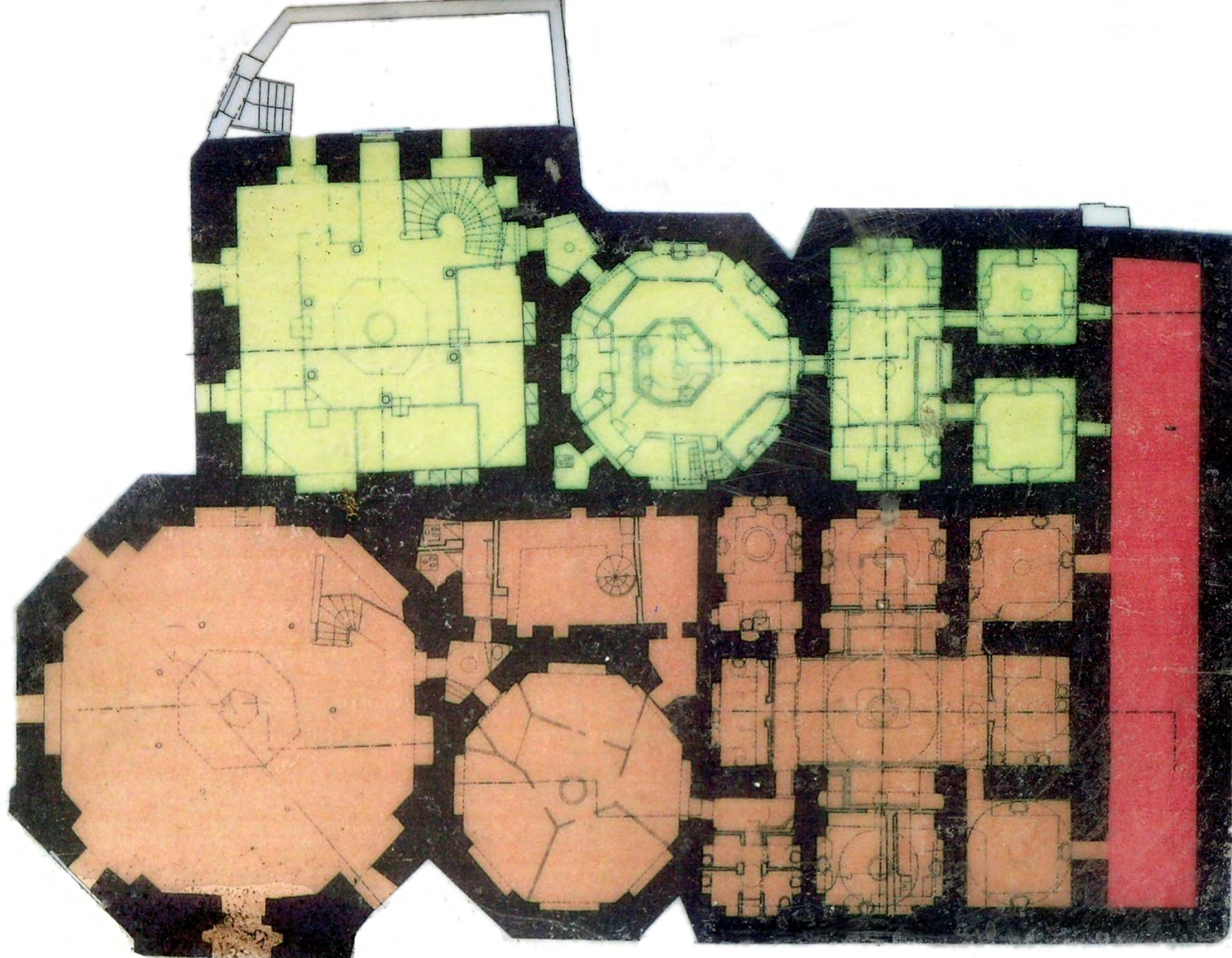


157 Photographie Bonfils, successeur A. Galadossian, Beyrouth. — Collection des Vues de tout l'Orient  
DAMAS. — Interieur d'un bain turc.























## NOUR AL-DIN AL-SHAHEED BATH

NAASB is considered one of the oldest public baths, still existing in the old part of Damascus.

It is located in Al-Bzouria market, adjacent to Khan As'ad Pasha in Damascus.

It was established by Sultan Nour Al-Din Al-Shaheed in the year 565 H. - 1169 AD.  
Repairing invigilating directorate  
commonalty for aftermath and museums 1919

حمام  
نور الدين الشهيد

يعتبر من أقدم حمامات دمشق القديمة  
يقع في سوق البزورية

قرب خان أسعد باشا في دمشق  
أنشأه السلطان نور الدين الشهيد  
سنة ٥٦٥ هجري - ١١٦٩ ميلادي  
رسم بإشراف المديرية العامة للآثار والمتاحف ١٩٧٩م